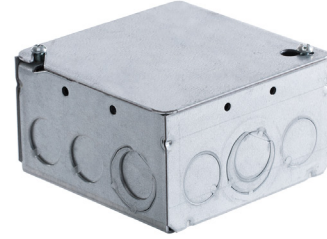


MODA DMX Wiring Hub makes wiring any DMX 512 project simple, easy and fast. Encased in a standard North American 4" x 4" x 2" electrical junction box this device takes care of all of your wiring needs. It accepts line voltage of 100-277V AC 50/60Hz and DMX data wires. It rapidly connects with standard wire nuts and protects the installation from accidentally wiring line voltage to data and has a built in high surge protection. It also boosts the DMX 512 signal back to its original strength ensuring the project is clean and the data corruption is kept to a minimum. It is recommended to use this junction box at every DMX splice or DMX connection. Designed & Developed by MODA LIGHT in Las Vegas, USA.



### INPUT

Input Voltage Range	100 - 277V AC 50/60 Hz
Input Frequency	47 - 63Hz
Input Current	12mA @ 120V AC/60Hz 9mA @ 230V AC/50Hz 8A @ 277V AC/60Hz
Input Power	0.7W @ 120V AC/60Hz 0.75W @ 230V AC/50Hz 0.8W @ 277V AC/60Hz
Standby Consumption	0.61W @ 120V AC/60Hz 0.7W @ 230V AC/50Hz 0.76W @ 277V AC/60Hz

### DIMMING INTERFACE

Standard	USITT DMX512-A RDM
Maximum Data Rate	15 Mbps
Maximum Load	128 transceivers on the bus
Maximum Series	10 Grade
ESD Protection	15KV, Air Gap Discharge IEC61000-4-2 15VK, Human Body Model
Surge Protection	Input/Output, D+ <--> D- 0.5KV
Over Voltage Protection	Differential Mode: 24V Common Mode: 24V

Project Name:

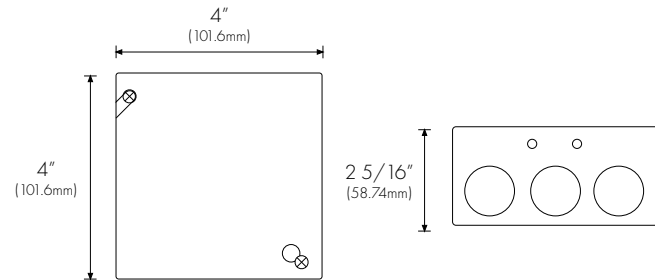
Notes:

SKU: 250-0100-01

### PHYSICAL

Dimensions	4" x 4" x 2 5/16" (101.6mm x 101.6mm x 58.74mm)
Weight	2.5 lbs (1,134g)
Construction	Steel
Ingress Protection	IP20
Operating Temperature Range	-20°C ~ +65°C
Storage Temperature	-25°C ~ +70°C

### DIMENSIONS



### STANDARDS & CERTIFICATIONS

