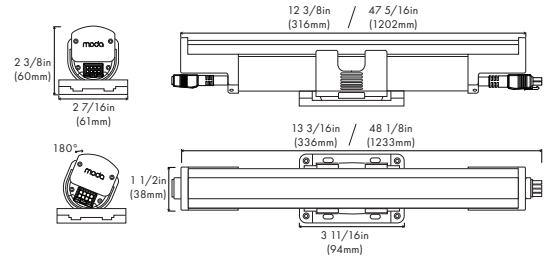
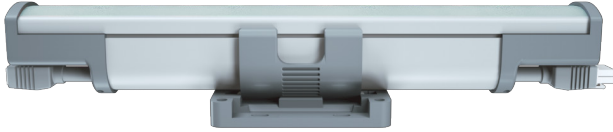


Project Name: \_\_\_\_\_ SKU: \_\_\_\_\_

MODA Contact: \_\_\_\_\_ E-Mail: \_\_\_\_\_

Type: \_\_\_\_\_ PO#: \_\_\_\_\_ Quantity: \_\_\_\_\_

Notes: \_\_\_\_\_



## PHYSICAL

<b>Dimensions</b>	L: 12 3/8in (318mm) L: 47 5/16in (1202mm)	W: 2 7/16in (61mm) H: 2 3/8in (60mm)
<b>Weight</b>	12in: 1.0lbs (0.45kg) 48in: 3.1lbs (1.4kg)	
<b>Applications</b>	Cove, Accent, & Indirect General Illumination	
<b>Construction</b>	Pure Aluminum Body, Polycarbonate Mounting Bracket and Polycarbonate Optical Lens	
<b>Ingress Protection</b>	Dry/Damp Location IP44	
<b>Thermal Management</b>	Moda Aluminum Heat Sink	
<b>Fixture Connections</b>	Integral Male & Female Connectors	
<b>Operating Temperature</b>	-40°F ~ 122°F (-40°C ~ 50°C)	
<b>Storage Temperature</b>	-40°F ~ 176°F (-40°C ~ 80°C)	
<b>Humidity</b>	0-95% Non Condensing	

## OUTPUT

<b>CCT</b>	2200K - 6500K
<b>Beam Angle</b>	120°
<b>CRI</b>	97
<b>SDCM</b>	2 Step MacAdam Ellipse
<b>Color Bin Tolerance</b>	Single Bin
<b>Lumen Maintenance</b>	90,000 Hours L70 @ 25°C 70,000 Hours L70 @ 50°C
<b>Testing Data</b>	Light Data LM-79-08 & LM-80-08

## ELECTRICAL

<b>Input Voltage</b>	100-277V AC 50Hz/60Hz
<b>Control</b>	DMX512
<b>Power Factor</b>	≥ 0.98

## MAX CONTINUOUS RUN

	120V AC	277V AC
SO/HO/HO+	80ft	80ft

## SPECIFICATIONS

	Lumens		Efficacy	
	1FT	4FT	1FT	4FT
SO	791	3188	79.10	79.69
HO	1203	4850	120.34	121.24
HO+	1393	5615	129.32	140.37

## POWER CONSUMPTION

	120V - 277V AC	
	1FT	4FT
SO/HO/HO+	10W	40W

## STANDARDS & CERTIFICATIONS



**Certification** Tested to UL & CSA by Intertek For Use in USA & CANADA. Exceeds ANSI C78.377-2015, CE, CCC, C-Tick, RoHS, & WEEE Compliant.

<b>Class</b>	1
<b>Warranty</b>	5 Year Limited Warranty

FIXTURE	ORDERING SKU
1 FT Moda Cove Interior Standard Output Silver DMX512 Dynamic White 2200K-6500K HCRI 1FT	MCI-SO-S1-S-DW-1
1 FT Moda Cove Interior High Output Silver DMX512 Dynamic White 2200K-6500K HCRI 1FT	MCI-HO-S1-S-DW-1
1 FT Moda Cove Interior High Output Plus Silver DMX512 Dynamic White 2200K-6500K HCRI 1FT	MCI-HOP-S1-S-DW-1
4 FT Moda Cove Interior Standard Output Silver DMX512 Dynamic White 2200K-6500K HCRI 4FT	MCI-SO-S1-S-DW-4
4 FT Moda Cove Interior High Output Silver DMX512 Dynamic White 2200K-6500K HCRI 4FT	MCI-HO-S1-S-DW-4
4 FT Moda Cove Interior High Output Plus DMX512 Silver Dynamic White 2200K-6500K HCRI 4FT	MCI-HOP-S1-S-DW-4

ACCESSORIES	DESCRIPTION	ORDERING SKU
Leader Cable US 8 Pin 10FT	Power to first fixture of run	MLCI-US-8PIN-G-10FT
Leader Cable US 8 Pin 25FT	Power to first fixture of run	MLCI-US-8PIN-G-25FT
Jumper Cable US 8 Pin 1FT	Connection between fixtures	MJCI-US-8PIN-G-1FT
Jumper Cable US 8 Pin 4FT	Connection between fixtures	MJCI-US-8PIN-G-4FT
Terminator 8 Pin	Must be fixed to last fixture for safety	MTI-8PIN-G
Interior Bracket Lock	Holds fixture in place for vertical installation	MCGI-BL-G

CONTROLS	DESCRIPTION	PART NUMBER	ORDERING SKU
Pharos TPC	Touch Panel Controller (512 Channels) Black on Black	N/A	TPC BB
Pharos TPC	Touch Panel Controller (512 Channels) Cream on Cream	N/A	TPC CC
Pharos TPC	Touch Panel Controller (512 Channels) White on White	N/A	TPC WW
Pharos LPC1	Lighting Playback Controller (512 Channels)	N/A	LPC1
Pharos LPC2	Lighting Playback Controller (1024 Channels)	N/A	LPC2
Pharos LPC4	Lighting Playback Controller (2048 Channels)	N/A	LPC4
Pharos LPCX	Lighting Playback Controller (10 to 100 DMX universes)	N/A	LPCxxx
Kandi Touch	DMX512 Wall Mounted Touch Panel Controller with Color Display	KND-TCH-B (Black)	250-0040
		KND-TCH-W (White)	250-0041
MODA Touch*	DMX512 Wall Mounted Touch Panel Controller	MTCH-S1-B (Black)	MTCH-S1-B
		MTCH-S1-W (White)	MTCH-S1-W

\* - MODA Touch default scene addressing can be found on MODA Touch Product Documentation and DMX Fixture Installation Guides.

CONTROL ACCESSORIES	DESCRIPTION	PART NUMBER	ORDERING SKU
Pharos PSU 48V/100W	Power Supply 48V DC 2A Mean Well Din Rail	N/A	PSU 48V-100W
Pharos BPS US BB	Button Panel Station US Black-on-Black (Magnetic Overlay)	N/A	BPS US BB
Pharos BPS US CC	Button Panel Station US Cream-on-Cream (Magnetic Overlay)	N/A	BPS US CC
Pharos BPS US WW	Button Panel Station US White-on-White (Magnetic Overlay)	N/A	BPS US WW
Pharos BPS US T2	Button Panel Station US Custom Insert (Type 2 Acrylic Overlay)	N/A	BPS US T2
Pharos TPC-FBB	TPC Flush Mounting Box	N/A	TPC FBB
Pharos TPC-SBB	TPC Surface Mounting Box	N/A	TPC SBB
Pharos EXT	Extension for TOC connectivity (DMX, DALI, IO, serial, mains powered)	N/A	TPC EXT
Pharos Cloud	Contact factory for information & pricing for Pharos Cloud		
Pathway DMX Splitter	Wall-mount, 4 ports, E1.20 RDM Compliant, Small - 10in X 13in X 4 1/2in	PWREP WM P4 TERM RDM SML DMX-RDM	250-0153
Pathway DMX Splitter	Wall-mount, 8 ports, E1.20 RDM Compliant, Medium - 10in X 23in X 4 1/2in	PWREP WM P8 TERM RDM MED DMX-RDM	250-0154
Pathway DMX Splitter	Wall-mount, 12 ports, E1.20 RDM Compliant, Medium - 10in X 23in X 4 1/2in	PWREP WM P12 TERM RDM MED DMX-RDM	250-0155
Shielded Cable 500FT	RS-485 Cable for DMX, 24 AWG stranded TC conductors, polyethylene insulation for interior use only	SW-L-19827-1-500FT	250-0251
Shielded Cable 1000FT	RS-485 Cable for DMX, 24 AWG stranded TC conductors, polyethylene insulation for interior use only	SW-L-19827-1-1000FT	250-0252